

NHG60 Smart gloss meter

- 3.5 inch super capacitive touch screen
- Multiple sets of measurement data can be displayed at the same time, easy to compare
- Connect to PC ,more extend functions
- Super configuration of hardware, integrated multiple innovative technologies
- Built-in lithium ion rechargeable battery with long lifetime



NHG60 is an economic gloss meter with independent intellectual property rights. It's manufactured according to ISO2813 and GB/T 9754. HG series with characteristic of larger display screen ,supply with highend QC software ,stable performance ,high accuracy and easy to use.

NHG60 FULL INTELLIGENT GLOSS METER

Gloss measurement so easy
with one-touch to complete!

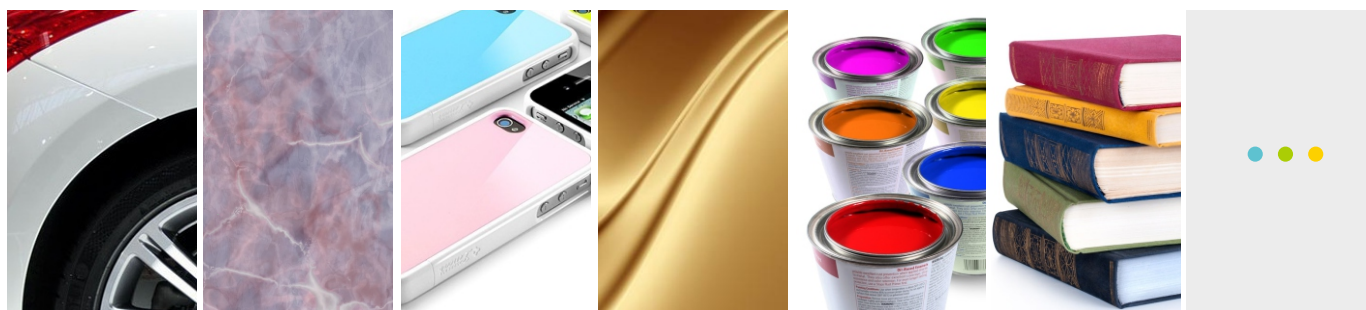
NHG60 Smart gloss meter

PRODUCT FEATURES

1. 60° angle for semi gloss
2. Display 5 sets of measurement data, good for comparison
3. Measuring mode: basic measurement, statistical measurement, continuous measurement, QC measurement (only for GQC6 software)
4. Continuous mode to check uniformity over large areas
5. Connect to PC, more extend functions
6. Input gloss value manually
7. Large touch screen operation, easy to use
8. Beauty appearance, good man-machine communication interface
9. Powerful functions to meet many different requirements
10. Large storage to save over 5000 data
11. Built-in lithium ion rechargeable battery



APPLICABLE INDUSTRIES



Automobile

Stonematerial

Plastic

Metal

Paints

Printing

Others

SPECIFICATION FEATURES

Measure Angle:60°

Comply with standard:ISO 2813、GB/T 9754、ASTM D 523、ASTM D 2457

Measuring Area (mm):9X15

Measurement Range:0~1000GU

Division Value:0.1GU

Measurement Range:0-10GU 10-100GU 100-1000GU

Repeatability: ± 0.1GU ± 0.2GU ± 0.2%GU

Reproducibility:±0.2GU ± 0.5GU ± 0.5%GU

Measurement Standard:Conform with JJG696 first class gloss meter working requirement

Chromaticity Corresponding:Corresponding with CIE 1931(2°) under CIE C light source:Errors:±1.2 , ± 1.2%

Measuring Time:0.5s

Dimension:L*W*H : 160mm*75mm*90mm

Weight:350g

Language:Chinese/English

Battery:3200mAh Li-ion Battery, >10000 times(within 8 hours)

Viewing Screen:TFT 3.5 inch, capacitive touch screen

Interface:USB/RS-232

Data Save:Basic mode: 1000, Statistical Mode: 5000, Continuous mode : 5000

Software:GQC6 Quality Control Software with QC report printing functions and more extended functions.

Operation Temperature:0~40°C(32~104°F)

Storage Temperature: -20~50° C(-4~122°F)

Humidity:<85% relative humidity, no condensation

Standard Accessories:Power Adapter, USB cable, User Manual, CD (Including QC software), Calibration Plate

Optional Accessories:Miniature Printer